

# Symantec Enterprise Vault™ Discovery Accelerator

Accelerate eDiscovery and simplify review

## Data Sheet: Archiving and eDiscovery

### Overview

Any IT administrator or legal counsel who has had to respond to a lawsuit, internal investigation, or ensure compliance with industry regulations understands the challenges of information governance, meeting court-sanctioned deadlines, and the soaring costs of third-party review.

Symantec Enterprise Vault™ Discovery Accelerator provides IT, IT/legal liaisons, investigators, lawyers, paralegals, and HR professionals the ability to search, preserve, and review information across the organization. First, Enterprise Vault provides an archiving platform that allows organizations to store, manage, and discover data from messaging systems, social media, PSTs, NSFs, file servers, Microsoft SharePoint®, instant messaging platforms, databases, and more. Then, Discovery Accelerator enables the centralized search, preservation, and review of this content from a single user interface.

Symantec simplifies eDiscovery for both IT and legal users while reducing costs, diminishing risk, and creating a repeatable and defensible end-to-end process.

### Key Benefits For legal:

- Search, preserve, and review multiple enterprise content sources from a single vendor.
- Initiate legal holds without costly and disruptive manual IT collection processes.
- Conduct early case assessment with targeted searches and filtering capabilities.
- Drive down third-party processing and review costs by collecting search results using keywords, metadata, and custom attributes.
- Search metadata and full attachments, including approximately 500 file types.
- Deduplicate in review prior to export to reduce legal processing and review costs.

- Reduce volume of data sent to service providers and outside counsel through culling, deduplication, and guided review tools.
- Export to native file system and message formats (including MSG, NFS, HTML, and PST) or in load file format (including Electronic Discovery Reference Model Extensible Markup Language) for third-party review, analysis, and case management tools.

### Key Benefits For IT:

- Automate the search, retrieval of electronic information across content repositories, and reduce the time, cost, and potential risk of manual searches.
- Reduce IT risk by establishing a chain of custody process and reporting for archived content with audit trails.
- Reduce or eliminate reliance on backup tapes for discovery.
- Place legal holds on potentially relevant information, regardless of the number of open cases, ensuring that it is not accidentally or maliciously deleted.
- Reduce legal dependence on IT for eDiscovery and enable legal and business users to run and manage their own search, retrieval, and legal holds.
- Provide case management capability for authorized reviewers/investigators with chain of custody tracking.

### Secure, hierarchical, audited search and production

Discovery Accelerator allows authorized reviewers (for example, corporate litigation, HR, external counsel) to quickly target and pinpoint specific email and files for legal discovery, external requests, or internal investigation. Enterprise Vault Discovery Accelerator provides a high level of organization and structure to the discovery process and enables content across the enterprise to be identified, preserved, reviewed, and marked, reducing dependencies on third-party vendors and outside counsel. Multiple databases can be created within Discovery Accelerator so that data can be segregated and



secured for specific groups (for example, legal or HR), or pursuant to specific requirements (such as international data privacy requirements). Built with scalability in mind to help search across petabytes of data from multiple content sources, Discovery Accelerator is easily administered by IT and operated by legal and HR with secure permissions to enable granular control of sensitive data.

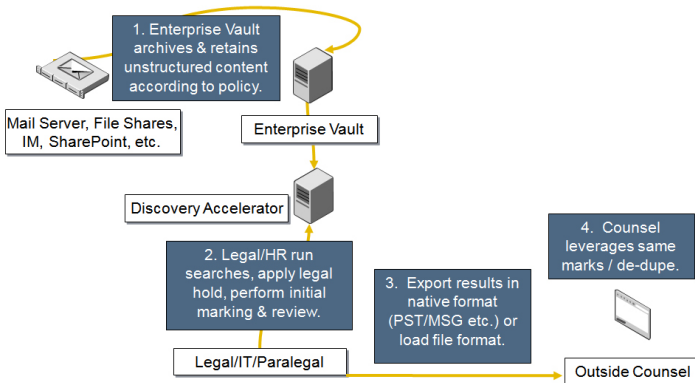


Figure 1. Accelerate eDiscovery while reducing cost and risk.

### Flexible and efficient search options for legal and HR

Attorneys, HR reps, and other authorized personnel can leverage Discovery Accelerator to run searches across multiple archived content sources as needed for a particular matter. Searches can be executed based on multiple criteria, including custodian, date range, classification, and keywords, utilizing Boolean fields and attachment types to shape results. Furthermore, searches can be designed to exclude blocks of text such as email disclaimers. Result sets can be quickly culled in the analysis phase through advanced search within a search, conversation threading, and various filter capabilities offered in Guided Review. In addition, data can be deduplicated in the review and export process, further increasing efficiencies and reducing cost. All searches can be scheduled, and ad hoc investigative search folders can be used to organize items associated with case searches. This gives the organization options, secured by rights, to run preliminary and test searches, isolate proprietary content from case audit trails, or export selected item sets for review by outside counsel.

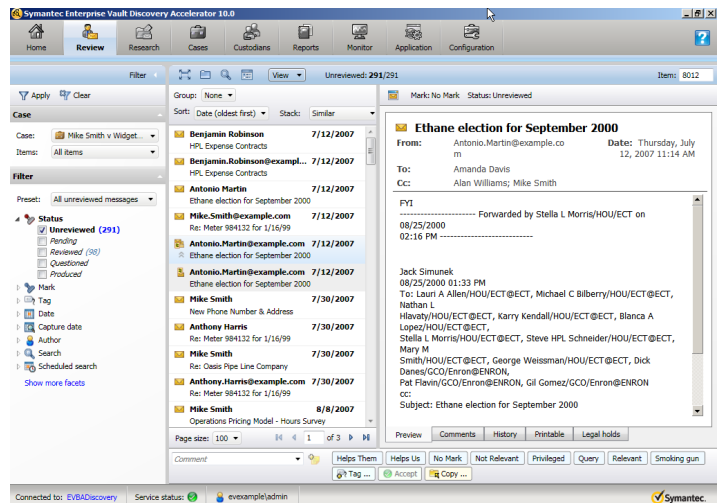


Figure 2: Discovery Accelerator provides flexible search options, scheduled searches and Guided Review to accelerate the early case assessment and discovery process.

### Apply legal hold to relevant content

With Discovery Accelerator, an authorized user can automatically apply legal holds to data identified as relevant to a case or multiple cases ensuring that it will not be deleted. Data on multiple legal holds will not be released until the last legal hold has been lifted. Additionally, the system can automatically run scheduled searches to add any new content to an existing legal hold. Once a case is closed, users can quickly release all holds and allow the documents to revert to their originally scheduled retention policies.

### Initial review and marking of items

Legal is provided with the tools to quickly and efficiently identify relevant information for early case assessment. Multiple reviewers can be assigned to review content identified by the Discovery Accelerator search. Reviewers can then mark items based on relevance, privilege, or any custom designations. The marks themselves can be permanently assigned to a message or groups of messages via the Discovery Accelerator production process. This means that if a privileged message that was produced from a case in Discovery Accelerator were to appear in review within another



case in Discovery Accelerator, it would be identified as such so it could be removed from production.

---

### Flexible export and production

Discovery Accelerator automates the production of relevant items, so they are ready to be produced directly to a requesting party or exported to third-party vendors or outside counsel for further analysis. Through the flexible options within Discovery Accelerator, all items can be produced in their native original file formats, including Microsoft® Exchange MSG and PST formats, and IBM Domino® or IBM Notes® NFS message formats, without having to open the original application. In addition, cases can be exported from Discovery Accelerator in load file format to third-party review, analytics, and case management tools.

---

### Symantec™ eDiscovery Platform powered by Clearwell

For organizations who need a better way to meet the demands of more frequent internal investigations, compliance audits, legal search requests, and more comprehensive litigation process, the Symantec eDiscovery Platform powered by Clearwell may offer a desirable alternative to Discovery Accelerator.

The Symantec eDiscovery Platform powered by Clearwell reaches data beyond the Enterprise Vault archive to additional network servers, storage systems, backups, application repositories, laptops and desktops. This information is searched in a transparent and unobtrusive manner and once all data is collected, advanced search, analytics and powerful features such as Predictive Coding take additional time and expense out of the process to cull and review documentation for legal procedures.

Together, Symantec Enterprise Vault™, Enterprise Vault Discovery Accelerator, and the Symantec eDiscovery Platform powered by Clearwell bring a new level of information governance and end-to-end eDiscovery.

---

### General system requirements

- Virtualized or Dedicated Microsoft® Windows Server® 2008 R2 or later
- Outlook® 2007SP3 or later (Needed only for export to PST format)
- IBM Notes 8.5.2 or later (Needed if exporting items from IBM Domino).
- .NET 3.5 SP1 or later
- 64-Bit architecture
- 4-8 GB RAM Minimum, 16GB recommended

For more detailed compatibility information for your system environment please refer to the compatibility guide at <http://www.symantec.com/docs/TECH38537>

### Storage options

Enterprise Vault allows customers to leverage existing storage platforms or implement more cost-effective storage specifically designed for archiving and long-term data retention. Storage options include:

- Direct Attached Storage (DAS) or Storage Area Network(SAN), recommended for index storage
- SAN or Network Attached Storage (NAS)
- WORM devices and content addressable storage (CAS)
- DVD/Optical/Tape (using Symantec NetBackup™)

For a complete list of requirements, please visit [www.symantec.com/enterprise-vault](http://www.symantec.com/enterprise-vault).

---



## More Information

### Visit our website

<http://www.symantec.com/enterprise-vault>

<http://www.symantec.com/ediscovery-platform>

### To speak with a Product Specialist in the U.S.

Call toll-free 1 (877) 294 5255

### To speak with a Product Specialist outside the U.S.

For specific country offices and contact numbers, please visit our website.

### About Symantec

Symantec Corporation (NASDAQ: SYMC) is an information protection expert that helps people, businesses, and governments seeking the freedom to unlock the opportunities technology brings—anytime, anywhere. Founded in April 1982, Symantec, a Fortune 500 company operating one of the largest global data-intelligence networks, has provided leading security, backup, and availability solutions for where vital information is stored, accessed, and shared. The company's more than 20,000 employees reside in more than 50 countries. Ninety-nine percent of Fortune 500 companies are Symantec customers. In fiscal 2013, it recorded revenues of \$6.9 billion. To learn more go to [www.symantec.com](http://www.symantec.com) or connect with Symantec at: [go.symantec.com/socialmedia](http://go.symantec.com/socialmedia).

### Symantec World Headquarters

350 Ellis St. | Mountain View, CA 94043 USA

+1 (650) 527 8000 | 1 (800) 721 3934 | [www.symantec.com](http://www.symantec.com)

